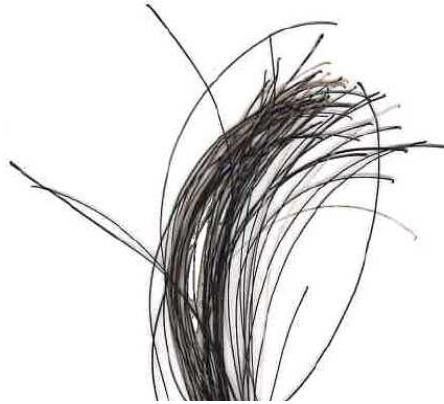


Hair Sampling

The roots (follicles) of the hair contain the DNA for analysis.



Sampling Procedure

- Remove any loose hair from the sample area
- Clean the sample area with a paper towel to remove excess dirt if necessary.
- Grasp hair close to skin and pull directly away from the skin (against the direction of growth).
- Obtain 20 or more hairs with roots (follicles). Excess hair will be stored.
DO NOT cut the hair, it must contain roots for DNA analysis.
DO NOT touch the follicles.
- Place the hair in a used or provided specimen envelope and seal the envelope.
Preferably DO NOT use plastic bags, because of condensation build up. Moisture may degrade the genetic material.
- Fill out the animal's information on the specimen envelope.
- Complete the request form.
- Ship specimen at room temperature.
- **Please Note:** The requestee is responsible for the cost of repeat tests if:
 1. Incorrect submission / information, or
 2. Inherent sample problems.
- **The specimen and completed submission forms should be sent to:**

**Unistel Medical Laboratories (Pty) Ltd
Suite 13, Private Bag X22, Tygervalley, 7536, RSA**



For Guthrie cards, specimen envelopes and submission forms, please contact Unistel Medical Laboratories on 021-9389213.

Disclaimer:

While every reasonable effort is made to prevent faulty results, Unistel Medical Laboratories do not accept any responsibility for any losses that may occur as a result of human or technical error. Should gross negligence be proven the claim shall not exceed the value of the contract.